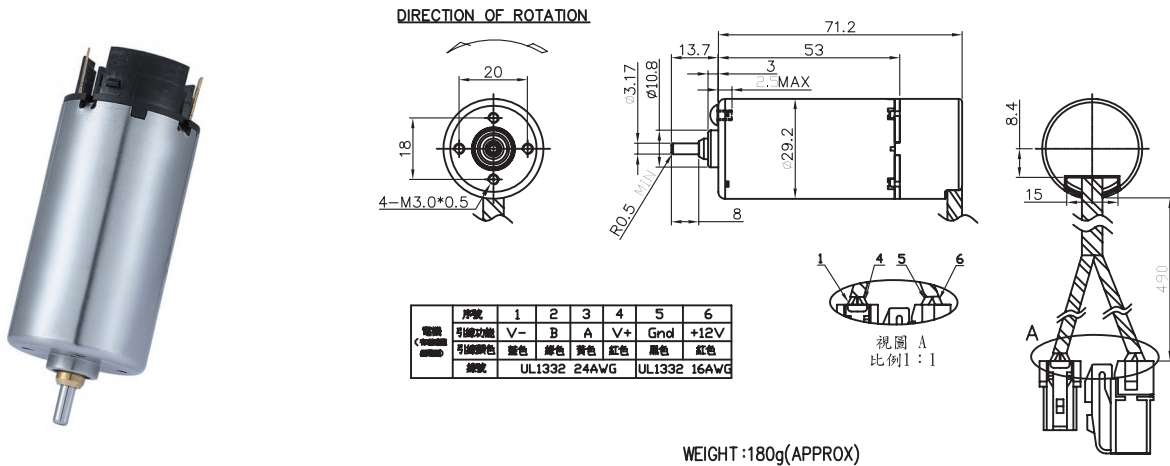


RK-2910

Carbon-brush motors

Application : Thrust Electric Push Rod

用途：汽車後尾門推杆



MODEL	VOLTAGE		NO LOAD		AT MAXIMUM EFFICIENCY					STALL			
	OPERATING RANGE	NOMNAL	SPEED rpm	CURRENT mA	SPEED rpm	CURRENT A	TORQUE Kg-cm	TORQUE mN-m	OUTPUT W	EFF %	CURRENT A	TORQUE Kg-cm	TORQUE mN-m
RK-2910VB-2832-R-CE-IE	10.0-14.0	12.0V CONSTANT	6600	700	5800	3.80	0.53	52	30	70	20	3.2	313
RK-2910VB-1763-R-CE-IE	10.0-14.0	24.0V CONSTANT	7000	230	6180	1.34	0.39	38	25	77	9	2.9	284

馬達的出軸長度及性能參數，EMC 對策可依客人要求做調整，詳情可詢問相關業務人員。
Please inquire your sales representative for output, performance and EMC solution.

